

Mk10D - Smart 3Phase Meter with Disconnect and Reconnect Switch

TECHNICAL SPECIFICATION

Accuracy

- Class 1 and Class 2
- Compliance to IEC62052-11, IEC62053-21 (Class 2), IEC62056-21, SP1618 (12kV Surge tests)

Three phase with Disconnect Option

- Class 1 and Class 2
- Compliance to IEC62052-11, IEC62053-21 (Class 2), IEC62056-21, SP1618 (12kV Surge tests)
- Three phase with Disconnect Option
- 100A Disconnect Switch

Voltage & Power Supply

- Nominal Voltage: 220V – 240V
- Operating Range: 180V – 290V
- Burden: < 10VA/phase
- Frequency Range: 45Hz – 65Hz

Current

- WC Range: 5/100A [Class 2 only], 10/100A
- Overcurrent: 20 times I_{max} for 0.5 seconds
- Burden: <0.5VA/phase

Environmental

- Temperature range class 3K7
- Operating Range: -25°C to 55 °C
- Limit Range of operation: -40 °C to 70 °C
- Storage Range: -40 °C to +80 °C
- Relative Humidity: Up to 95% non-condensing

Measurement

- 3 element, 4 quadrant
- Import/Export Wh, varh and Vah
- Absolute Wh, varh and Vah
- Independent measurement of Phase A, B, C or Total
- W, var, VA, Vrms, Irms
- Power Factor, Phase Angle, Phase to Phase Angle, Frequency

Load Survey / Profile

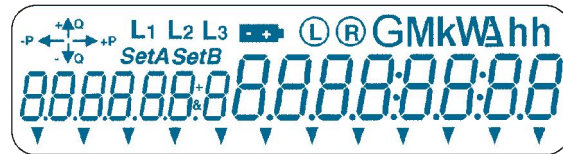
- Up to 2MB non-volatile storage
- Up to 32 channels
- Interval programmable from 1 to 60 minutes
- 2 independent Load Surveys
- Energy and Instantaneous Values as channel sources

Inputs / Outputs Configuration

- Maximum of 4 I/O with any combination of I/O possible
- Options include: Passive Inputs, Active Inputs, S0 Output, Relay Output
- Passive Input Voltage: 5V, 12V, 48V, 110V, 240V
- Active Input Voltage: 5V
- BOSFET Outputs: 240V, 90mA maximum
- S0 Outputs: 27V, 27mA Maximum
- Relay Outputs: 240V, 5A / 2A
- Output Pulse Width: 1 ms to 100 ms

LCD

- Large Digit Display
- Up to 60 User Defined Screens of any meter parameter
- Definable Enunciators
- Display Accessible without Mains Power



Time Clock and Calendar

- Accuracy (internal) within +/- 0.5 seconds per day at 25°C
- Backup of 10 years without power
- Support Daylight Saving Time
- Support for Gregorian or Persian Calendar

Time of Use

- 8 rates plus unified rate
- 32 configurable channels
- 200 programmable special days
- Daily, weekly, Monthly, Yearly, Special
- 13 previous periods, plus period totals
- Block or Rolling Maximum Demand
- Energy, pulsing inputs
- Time of Maximum Demand

Security

- Multi-Level Security [Username/Password with encrypted login]
- 7 Tier Security Hierarchy
- 6 Individual Users
- Configurable Security Groups

Communications

- Either ANSI Type 2 Optical Port (ANSI C12.18) or IEC62056-21 (IEC61108) Optical FLAG Port
- RS-232 for modem connection (standard or 8V Modem Power Supply)
- RS-485 Multi-drop (2 or 4 wire, RJ45 or screw Terminal)
- GPRS Capable via UDP/IP
- MV90TM Compatible

MV90™

- Compatible with MV-90 Reading System via EDMX TIM
- MV-90 TIM able to download 90 days of data in less than 30 seconds
- Clock Synchronization via MVRS and MV-90

Sag / Swell

- 5 cycle resolution
- Records time / date / phone / duration / worst excursion
- Programmable trigger levels

Tamper / Alarms

- Provision for sealing using conventional wire or plastic seals
- Bypass and reverse current detection
- Advanced Tamper detection and logging available
- Pre-programmed alarms for meter self check
- Alarms can be configurable to be linked to LEDs, Enunciators or Outputs
- Alarms recorded in event log

Software

- EDM I EziView software available for programming and reading the meter [Windows 98/ME/NT/2000/XP]
- EDM I EziView MultiDrive software available for large scale Automatic Meter Reading



JOINT VENTURE COMPANY

between EDM I Singapore
(www.edmi_meters.com)
& Omne Agate System P. Ltd.
(www.omniagate.com)

WALLABY METERING SYSTEMS PVT. LTD.

M-3, 9th Street, Dt. VSI Estate, Thiruvanniyur,
Chennai - 600 041.
Phone : 91-44-2454 4550. Fax : 91-44-2454 4551.
Email : info@wallaby_meters.com

Website: <http://www.edmi-meters.com>