

Basic Specification Sheet - Mk10 (ATLAS®)

Accuracy

- Class 1 & 2 (to IEC 61036)

Voltage

- Voltage range - 140 to 240V AC phase to neutral
- Burden - <10VA / phase @ Vn (3 phase), as per IEC 62053-61, 1998
- Frequency 45-65 Hz

Current

- C.T. Range - 5/20A
- W.C. Range - 10/100A
- Short time over-current - 20 times the I_{max} for 0.5 seconds
- Burden - <0.5VA/phase

Measurement Modes

- Single phase (3 circuits)
- 3 phase 3 wire *
- 3 phase 4 wire

Measured Energy Values

- 3 element, 4 quadrant
- Import/Export Wh, varh and VAh
- Absolute Wh, varh and VAh
- Phase A,B,C or Total

Other Measured and Displayed Values

- Power: W, var, VA
- True RMS Voltage (3 phase)
- True RMS Current (3 phase)
- Power factor
- Frequency
- Phasor angles

Pulsing Inputs / Outputs

- Maximum of 6 I/O with up to 6 outputs or 2 inputs
- Output voltage - 5 ~ 220V DC, 12 ~ 240V AC
- Output current - 90mA maximum
- Output pulse width - 1ms to 100ms
- Input voltage - 5, 12, 48, 110, 240V AC/DC
- Time synchronisation*

Communications

- Local - ANSI type 2 optical or FLAG™ (IEC 1107)
- Remote - isolated RS485 or RS232

Communications Possibilities

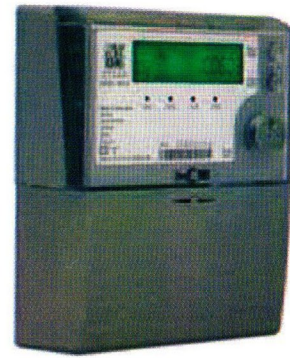
- ANSI Type 2 Optical
- IEC 1107
- RS232
- RS485 (2 or 4 wire multidrop)
- SCADA
- Modems (PSTN/GPRS/GSM/CDMA)
- MV90™
- PPP/GPRS

Temperature Range

- Operating -10 to +60°C
- Storage -40 to +85°C

Data Storage (Configuration, TOU Data and Load Survey)

- FlashRAM, indefinite storage period
- Battery backed up RAM



Time Keeping

- Accuracy (internal) ± 30 sec/month
- Backup time - 2 years without power or 10 years (optional)
- Backup type - lithium battery
- Mains synchronised or internal crystal (selectable). Mains synchronised reverts to internal crystal on loss of all phase volts

Time Of Use

- Up to 8 rates plus unified rate
- Up to 32 separate import and export registers
- Up to 200 programmable special days
- Daily, Weekly, Monthly, Yearly, Special
- 13 previous periods, plus period totals
- Block or Rolling Maximum Demand
- Energy, pulsing inputs
- Time of Maximum Demand

Load Survey / Profile

- NEM compliant
- 400 day-channel capacity at 30 minute intervals
- Up to 32 channels
- Interval programmable from 1 to 60 minutes
- 2 Independent surveys
- Energy, instantaneous readings, pulsing inputs, average/min/max readings

Sag / Swell

- 5 cycle resolution
- Records time/date/phase/duration/worst excursion
- Programmable trigger levels

LCD Display

- 8 digits for measurement
- 7 digit ID (EDIS compliant)
- Up to 60 user definable screen displays
- Displays any available meter parameter
- Battery is used for reading when mains supply is absent
- Chinese character version available

Equipment Failure Alarms (EFAs)

There are pre-programmed alarms based on numerous:

- Self checks
- Tamper and wiring checks

These alarms can:

- Turn on an LED, LCD Indicator or relay output
- Record an event in the event log

Software

- EziView Windows® software (optional), can be used for programming and reading the meter
- EziView also allows offline configuration of tariff programs and all meter parameters, for later upload



JOINT VENTURE COMPANY
between EDMI Singapore
(www.edmi_meters.com)
& Omne Agate System P. Ltd.
(www.omniagate.com)

WALLABY METERING SYSTEMS PVT. LTD.
M-3, 9th Street, Dr. VSI Estate, Thiruvanniyur,
Chennai - 600 041.
Phone : 91-44-2454 4550. Fax : 91-44-2454 4551.
Email : info@wallaby_meters.com

Website: www.wallaby-meters.com